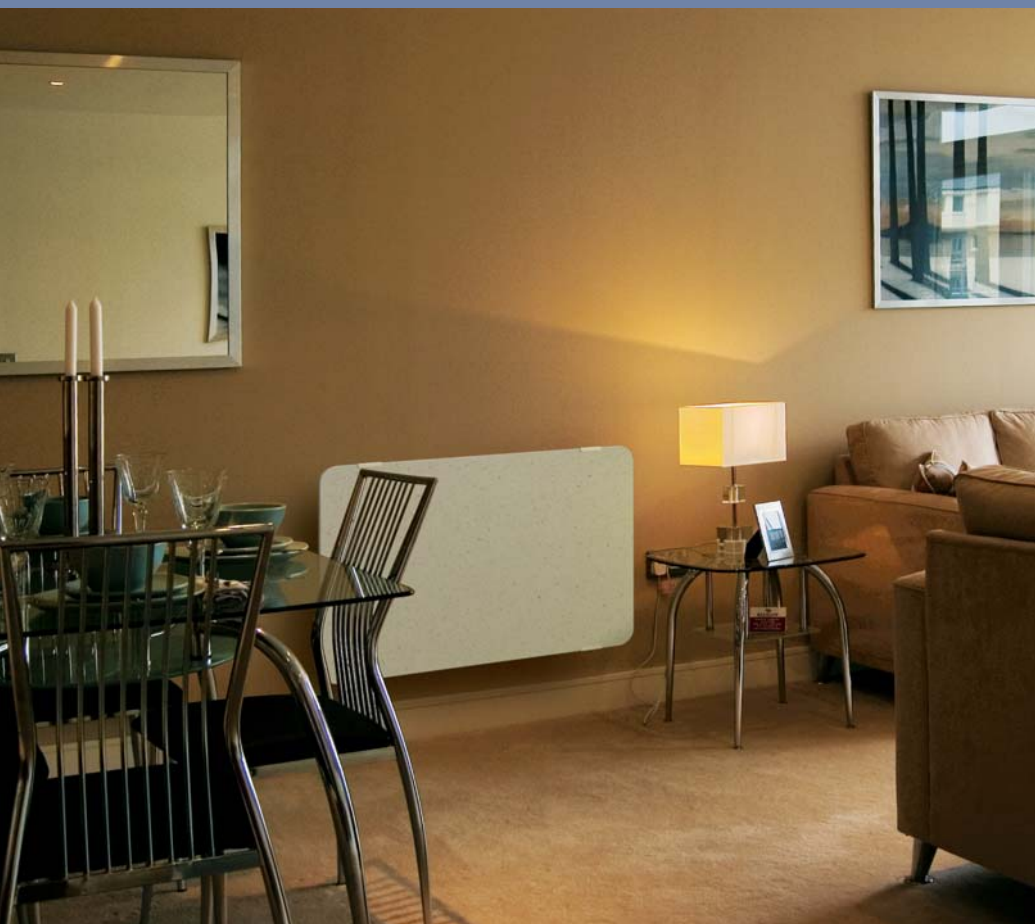


Featuring an elegant, volcanic lava front panel and a slimline design, Naturay is available in white and beige finishes and provides high heating properties with two heating elements for perfect heat control.

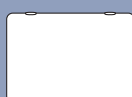
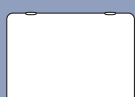


NAT 10 white



NAT 10V beige

NATURAY HORIZONTAL



| Model code | NAT 08 | NAT 10 | NAT 13 | NAT 15 | NAT 20 |
|--------------|---------------|---------------|---------------|---------------|---------------|
| Rating watts | 750 | 1000 | 1250 | 1500 | 2000 |
| Height mm | 589 | 589 | 589 | 589 | 714 |
| Length mm | 844 | 844 | 1122 | 1122 | 1122 |
| Depth mm | 128 | 128 | 128 | 128 | 128 |
| Colour | white / beige | white / beige | white / beige | white / beige | white / beige |

NATURAY VERTICAL



| Model code | NAT 10V | NAT 15V | NAT 20V |
|--------------|---------------|---------------|---------------|
| Rating watts | 1000 | 1500 | 2000 |
| Height mm | 844 | 1122 | 1122 |
| Length mm | 589 | 589 | 714 |
| Depth mm | 128 | 128 | 128 |
| Colour | white / beige | white / beige | white / beige |